

SIMON | ANDERSON

MULTIFAMILY TEAM

KING COUNTY APARTMENT SPECIALIST



MATT LAIRD
Vice President
425.736.5516
matt.laird@kidder.com

Matt is an apartment broker specializing King County apartment & development land sales and off-market acquisitions.

SUPPORT TEAM



JACK COUNIHAN
Senior Analyst

Jack specializes in market research, apartment valuations, and sales tracking.



ASHLEY WOODLIFF
Marketing Coordinator

Ashley manages team and property marketing ensuring collateral exceeds market expectations.



CASSIE PIETERS
Executive Assistant

Cassie provides balance and support through administrative contributions.

FOUNDING PARTNERS



DYLAN SIMON
Executive Vice President
206.414.8575
dylan.simon@kidder.com

Dylan is a market-leading broker in Seattle and the Puget Sound region, specializing in the sale of apartment buildings and development land.



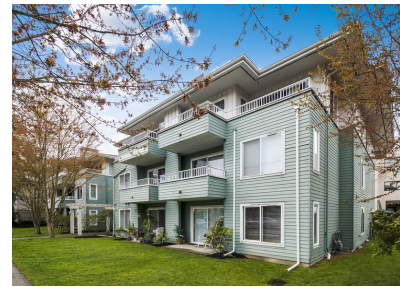
JERRID ANDERSON
Executive Vice President
206.499.8191
jerrid.anderson@kidder.com

Jerrid is the most active apartment broker in Seattle, where he has brokered more than \$1 billion in apartment and land sales.

RECENT TRANSACTIONS



**NEUTRA
SEATTLE, WA**
\$ 3,625,000 | 12 Units



**INTERLAKE 18
SEATTLE, WA**
\$5,600,000 | 18 Units



**VILLAGE GREEN
SEATTLE, WA**
\$7,070,000 | 163 Units



**VALE
SEATTLE, WA**
\$9,950,000 | 40 Units

Building the lives we want through real estate.

SIMONANDERSONTEAM.COM

